

TOOLBOX TALK

DISCUSS WITH CREWS

mm/dd/yyyy

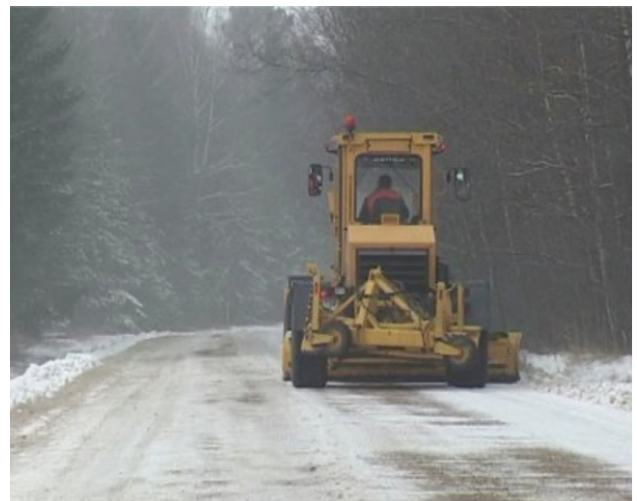
COLD WEATHER AND MACHINES

Topic Overview

Under-inflated tires, icy patches and poor traction affect heavy equipment as much as they affect cars. Cold weather can be hard on machines, and this introduces additional safety hazards for which you need to be ready, in addition to cold stress that you may experience while preparing the equipment.

Hazards to be aware of

- Icy access steps on equipment and slippery ground around the equipment.
- Frozen ice or mud on tracks and undercarriages.
- Ice build-up in valves, seals, or fittings.
- Salt or road de-icing chemicals causing rust or corrosion.
- Reduced tire pressure and tire brittleness.
- Brittle, cracked, or loosened rubber hoses.
- Frozen or blocked lines.
- Frozen battery or alternator.



Safety Tips:

- To better prepare your machines for cold weather try the following:
 - Use block heaters.
 - Use enclosed storage facilities when machines are not being used.
- Clear all snow and ice off equipment before use.
- Use the correct lubricants.
- Provide the correct cooling system protection for the conditions in which you will be working.
- Inspect all rubber parts weekly.
- Keep all batteries fully charged.
- Always fill the fuel tank at the end of the shift.
- Check the air filters on a regular basis when snow is present.
- Before your shift, run the engine until it reaches operating temperatures.
- Watch for slippery ground and metal when walking around and climbing on and off equipment.

Resources

Refer to the operation and maintenance manual or your equipment dealer for specific instructions on operation and maintenance during cold weather.

TOOLBOX TALK

LOCATION		DATE	
PRESENTED BY		TIME	

Review previous Workplace Inspections

Review previous Accident/Incident/Near Misses

Other Safety Issues or Suggestions made by Staff

Attendance Record

NAME	SIGNATURE	NAME	SIGNATURE

TOOLBOX MEETING REVIEWED	NAME (PRINT)	SIGNATURE	DATE
MANAGEMENT REP			
WORKER REP			