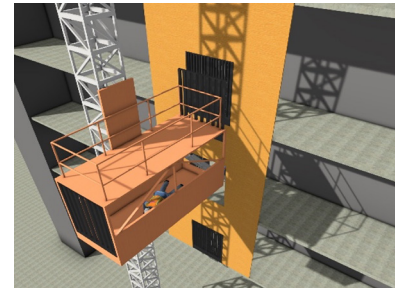


MAIN PROCEDURE

HOIST OPERATOR RESCUE

This is the Main Procedure which identifies all the steps common to the different scenarios where an incapacitated Hoist Operator would require rescue. It is used in conjunction with the Supporting Safe Work Procedures identified below.



RESCUE PROCEDURE

1. General Alarm - Hoist Operator is found incapacitated and requires rescue - **Incident Commander** will assemble the necessary Rescue Team.
2. **Incident Commander & Rescue Operator** based on the location of the Hoist Car, determine which Access Plan [see options below] will be used.

The following steps 3 & 4 may proceed at the same time.

3. **Incident Commander** initiates the Emergency Communication Plan.
External Communication Lead contacts **911** & the Hoist Equipment Supplier Contact and provides them with the details of the incident and the Access Plan to be used.

Example: "A Hoist Operator needs to be rescued. The Hoist Car is still operational. We are implementing the _____ Access Plan"

4. **Rescue Operator** collects the Special Equipment Required and proceeds to the necessary location as per the specific Access Plan.
5. **CRITICAL STEP** - **Rescue Operator** will call to Initiate Lockout [Modified Hoist Lockout].
6. **Rescue Operator** will access Hoist Car as per the applicable Access Plan.
7. **CRITICAL STEP** - **Rescue Operator** will call to Remove Lockout [Modified Hoist Lockout].
8. **Rescue Operator** will operate the Hoist Car to the main Hoist Loading Deck.
9. **Rescue Operator** will open the Hoist Gate at the Hoist Deck to allow for the entry of First Aid personnel.

SPECIAL EQUIPMENT REQUIRED

- Hoist Building Gate key or tool
- Lockout Tagout Kit
- Method of communication (site radio, mobile phone) between all workers involved
- Other equipment required by applicable Access Plan

SUPPORTING SAFE WORK PROCEDURES

To be implemented during this Access Plan

- Applicable Access Plan
- Modified Hoist Lockout
- Emergency Communication Plan

ACCESS PLANS

- A. Hoist below floor
- B. Hoist 0.5 to 1m (20" - 40") above Level – Plywood Option
- C. Hoist 0.5 m (20") or more above Level – Ladder Option
- D. Hoist Roof Access
- E. Traversing via Dual Hoist
- F. Accessing Hoist via DEP